

Vaginal specimen self-collection for BD MAX™ Vaginal Panel and

BD Molecular Swab Specimen Collection Kit

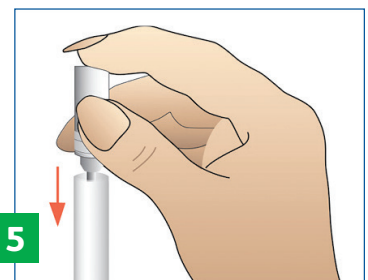
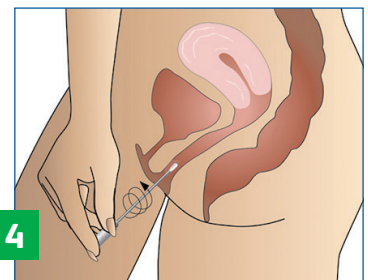
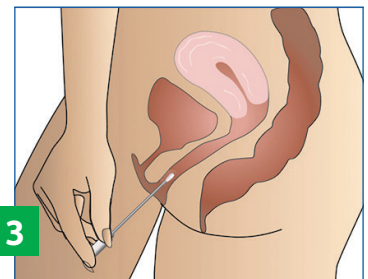
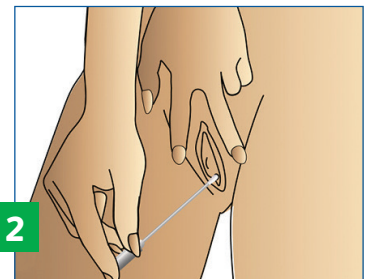
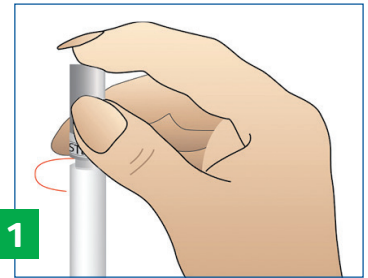
For clinician staff

- **Do not use a lubricant** to aid in self-collection.
- Patient must collect their specimen **before** any vaginal exam is performed with a lubricant.
- Only the swab portion of the collection kit should be given to the patient.

Patient instructions for self-collection

Please read all instructions before collecting specimens. If you have any questions about this procedure, please ask your doctor or nurse.

- Wash hands with soap and water. Rinse and dry.
1. Twist the cap to break the seal (Figure 1). Do not use if seal is broken or damaged. Carefully pull the cap with attached swab off the tube. Do not touch the soft tip or lay the swab down. If you touch or drop the swab tip or the swab is laid down, discard the swab and request a new vaginal swab. Check for presence of the swab tip. If the swab has no tip, discard it and request a new vaginal swab.
 2. Hold the swab by the cap with one hand so the swab tip is pointing toward you (Figure 2). With your other hand, gently spread the skin outside the vagina. Insert the tip of the swab into the vaginal opening (Figure 2). Point the tip toward your lower back and relax your muscles.
 3. Gently slide the swab 2 inches (5 cm) into the vagina (Figure 3). If the swab does not slide easily, gently rotate the swab as you push. If it is still difficult, do not attempt to continue self-collection; consult your clinician at this point.
 4. Rotate the swab for 10 to 15 seconds (Figure 4).
 5. Withdraw the swab without touching the skin outside the vagina. Place the swab in the tube and cap the tube securely (Figure 5).
- After collection, wash hands with soap and water, rinse, and dry. Return the swab in its tube to the nurse or clinician as instructed.



BD, Sparks, MD 21152-0999 USA
800.638.8663

bd.com

