



Saliva (Spectrum) Home Collection Instruction

Do not eat, drink, brush your teeth, use mouth wash, chew gum, chew tobacco, vape or smoke 30 minutes before collection.

Kit items: Spectrum Collection Device, biohazard bag with absorbent pad, 2 alcohol wipes, specimen label

- Allow collection device to sit at room temperature for 60-90 minutes before collection.
- The absorbent pad inside the biohazard specimen bag must remain in the bag. Do not use or remove from the bag.
- Some items within the kit are considered choking hazards. Keep out of reach of children.
- Do not ingest liquid in the cap or alcohol wipe package.

1 Prepare for saliva (drool) collection

- Clean your hands with soap and water or hand sanitizer.
- Open the saliva collection package by peeling the wrapper apart at the hand end of the package.
- Remove the collection device from the packaging, being careful to only touch the outside of the tube.



2 Fill the tube with saliva (drool)

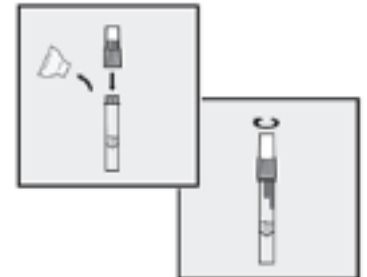
- Wipe off any lipstick, lip balm, or make-up around your mouth.
- Allow drool to collect in mouth for 2-3 minutes.
- Collect drool from the front of your mouth only. Do not clear your nose or throat.
- Fill the tube until your drool (not including bubbles) is at or just above the wavy line (2mL). **DO NOT OVERFILL**

Note: keep collection device at room temp before collecting.



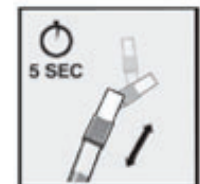
3 Replace the funnel with fluid cap

- Remove the funnel from the tube. Screw on the enclosed cap **TIGHTLY** to release the solution that will stabilize your drool.
- You will know it works when the blue solution from the cap is released into the tube. Firmly tighten cap to assure the cap and tube is completely sealed.



4 Shake the tube

- Shake the tube for at least 5 seconds. This will ensure your samples mixes thoroughly with the stabilizing solution.



5 Sanitize and label the tube

- Wipe down the saliva tube with an alcohol wipe. Allow to air dry for 15-20 seconds.
- Label the specimen using provided label. The label must include: patients full legal name with last name first, followed by the legal first name (ex: Doe, Jane), date of birth, and date and time of collection.
- Place labeled specimen in the biohazard bag. Do not remove or use the absorbent pad included in the bag.
- Wipe down the external surface of the bag with a separate alcohol wipe.



**DO NOT REMOVE ABSORBENT
PAD FROM BAG**

Name: Doe, Jane
DOB: 10/19/1980
Date/ Time: 12/2/20 9:00 am