

The Right Swab for the Job

Microbiology Lab Testing (Bacteria / Fungus / Viral / AFB)

Note: Requests for anaerobic culture will always have aerobic culture and gram stain performed.

BEST option for Aerobic, Anaerobic, fungal, AFB cult.

Unpreserved, direct specimen in sterile container.

Please specify source/body site



Sterile Cup/Sterile Syringe*

Tissue, body fluids, pus, or drainages.

*If using syringe, remove the needle and securely cap before transport.

Aerobic/Anaerobic Culture

Please specify source/body site

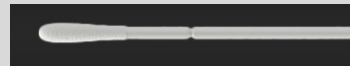
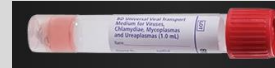


E-Swab, white cap, flocked swab

Use for: wounds, gram stain, fungal cultures (excluding blood), MRSA PCR, VRE Culture, Strep A PCR (throat), Strep B PCR (vaginal/rectal)

Do not use for Tissues, Body Fluids, AFB, MVP PCR, Flu/RSV/COVID, Resp, or Viral PCR or GC/Chlam/Trich

Fluvid or SARS-CoV-2 PCR Nasal Swab Preferred



This swab is larger, white, rounded. Collect swab and place it into Viral Transport Medium tube.

Nasal swab preferred, but NP swab is also acceptable.

Do not swab nasal for Respiratory PCR

Respiratory PCR Panel – Nasopharyngeal (NP) Swab Only



NP swabs are skinny flexible plastic or flocked swabs. This allows for easier passage into the NP cavity. Place swab into Viral Transport Medium tube.

NP swab is also acceptable for Fluvid PCR or SARS-CoV-2 PCR. Note: if Nasal swab is submitted, Resp PCR Alt Source must be ordered, test will be sent out.

GC, Chlamydia or Trichomonas PCR Testing: Aptima Swab (Hologic) only



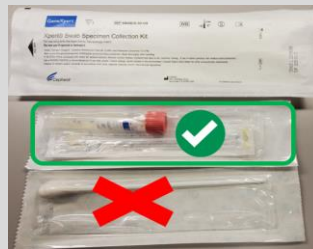
OR



Collection kit is unisex. Sources can be eye, throat, rectal, genital. Follow the cleaning/collection instructions on the packaging.

Female Multiplex Vaginal Panel (MVP PCR):

(BV, Candida group, C. glabrata/krusei, Trichomonas)

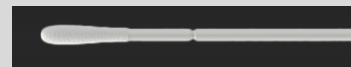
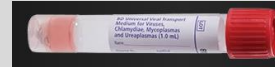


Inside collection kit, use packet with pink capped vial and

flocked swab. DO NOT use large swab. Discard into trash.

Obtain collection devices from Memorial Lab. Follow collection instructions on Lab Test Catalog.

Viral PCR (i.e. Herpes, VZ, Enterovirus/Parechovirus, etc)



This swab is larger, white, rounded. Collect swab and place it into either Viral Transport Medium tube.

CHCO MRSA PCR Age <2 yrs



Obtain swab from Memorial Lab. Swab nares, test sent to CHCO Aurora Micro.

Note: If patient is age 2 or older, use E-swab (same as Aerobic/Anaerobic Culture, see above). Test performed at Memorial Central Micro.

Micro is available 24/7 for any questions. 719-365-5686.