

UCSF Clinical Laboratories Organizational Chart

CAP/CLIA Terminology Key:

1. Medical Directors = CC, TS/TC, GS
2. Section Directors = CC, TS/TC
3. Manager = TS/TC (excluding Tx Svc, Cyto, MDX)
4. Senior Supervisors = TS/TC (excluding Tx Svc, Cyto, MDX)
5. Supervisors = GS

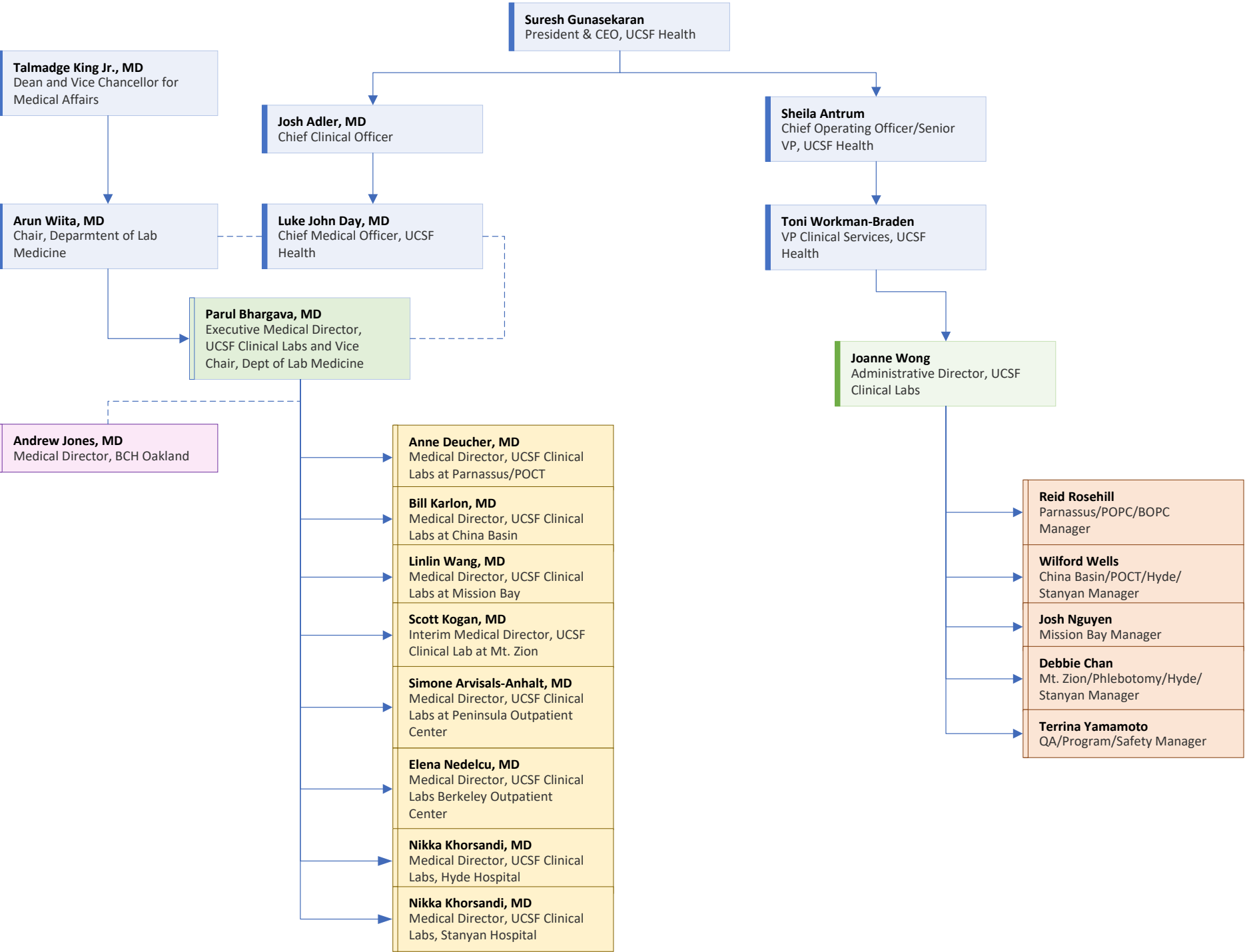
TS = Technical Supervisor

TC = Technical Consultant

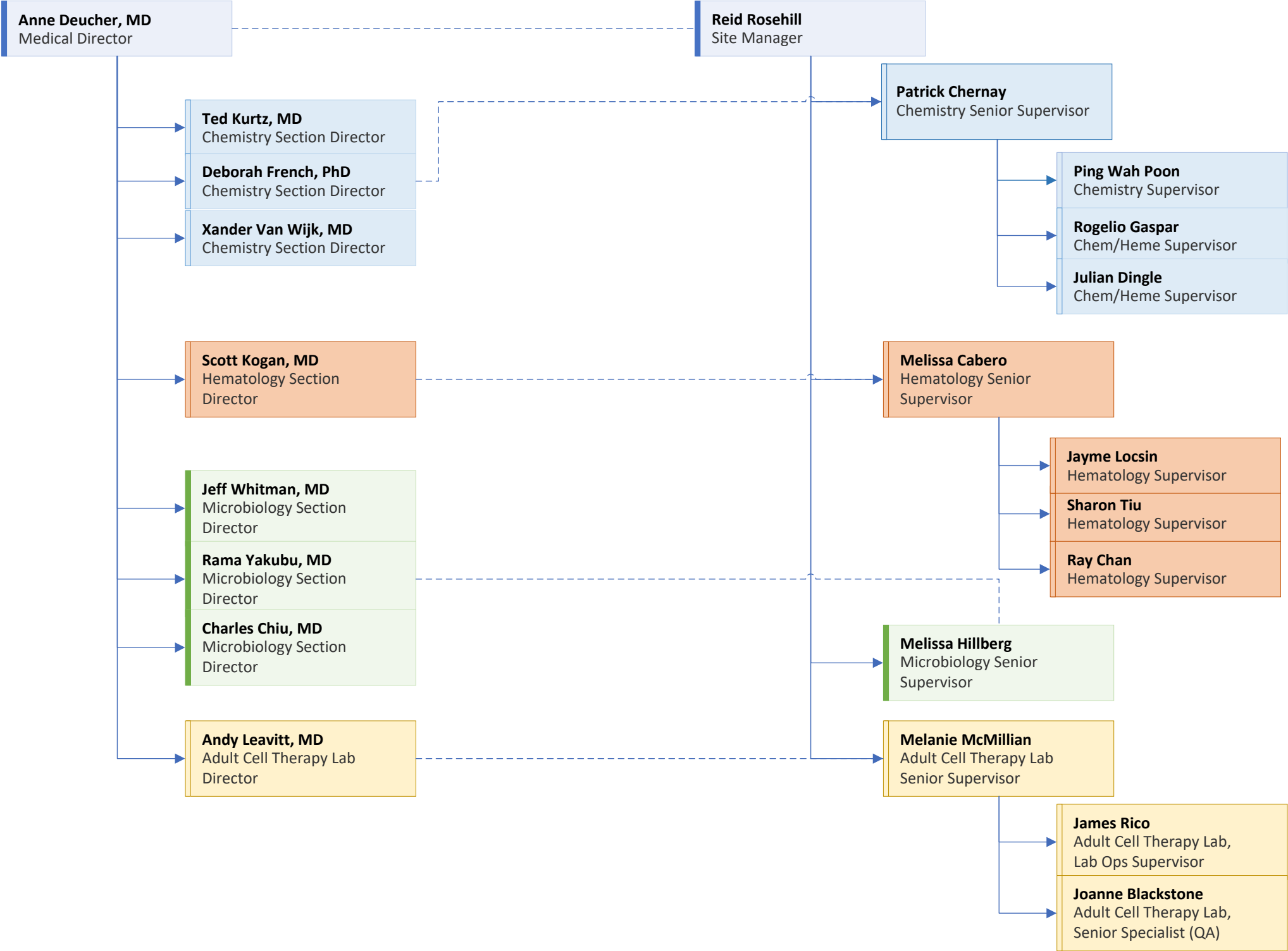
GS = General Supervisor

CC = Clinical Consultant

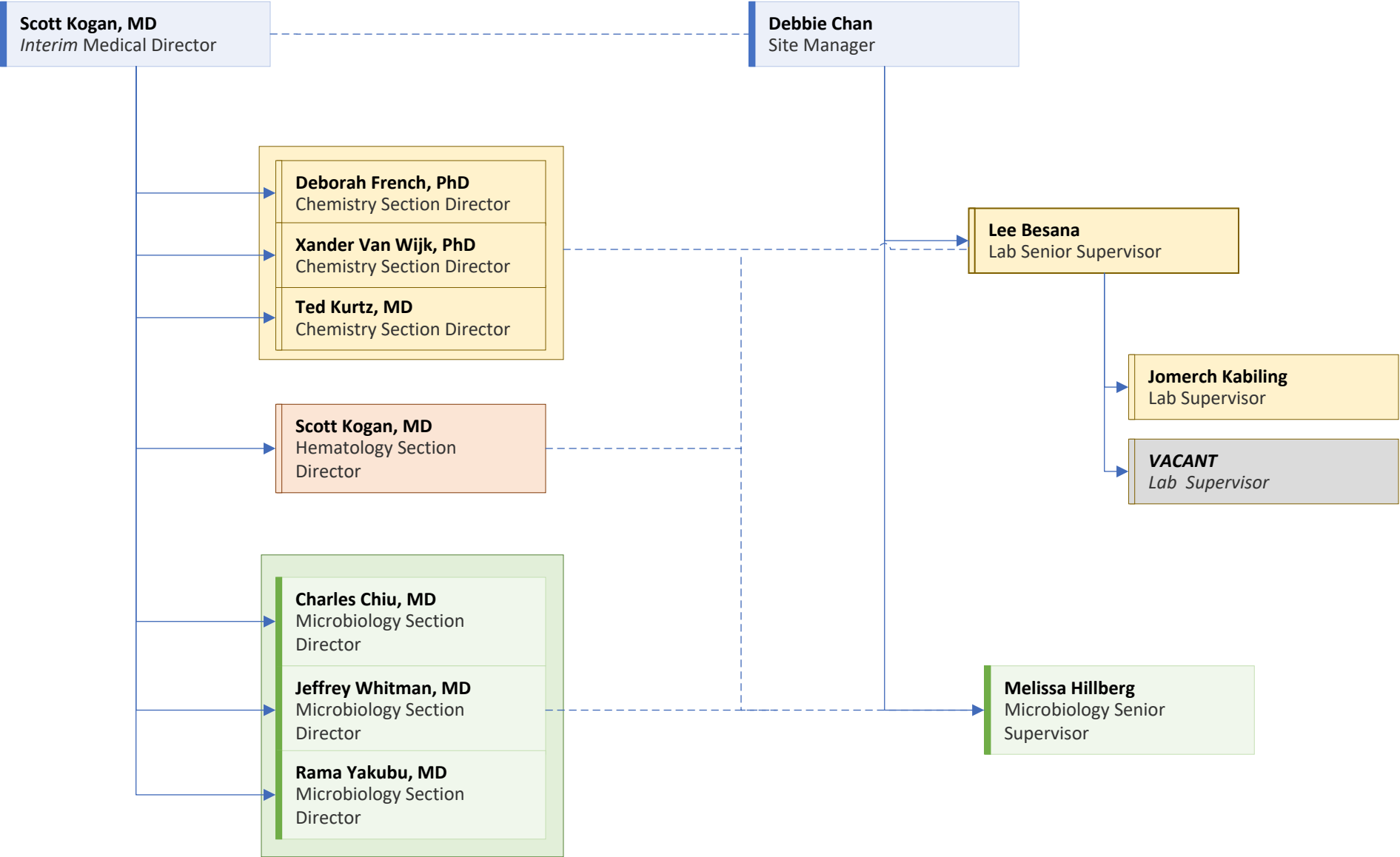
UCSF Clinical Labs Senior Leadership



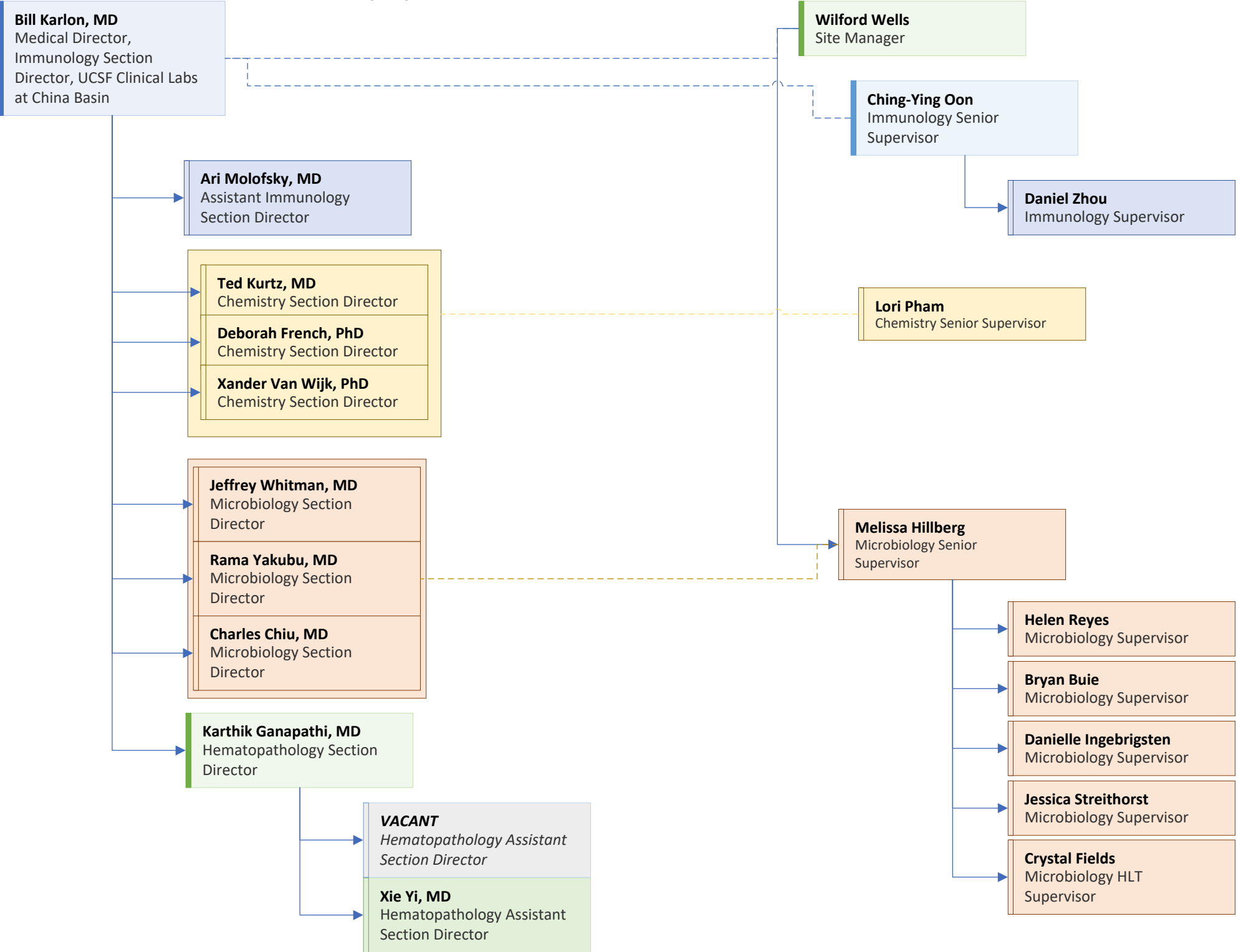
UCSF Clinical Labs at Parnassus Heights (PH)



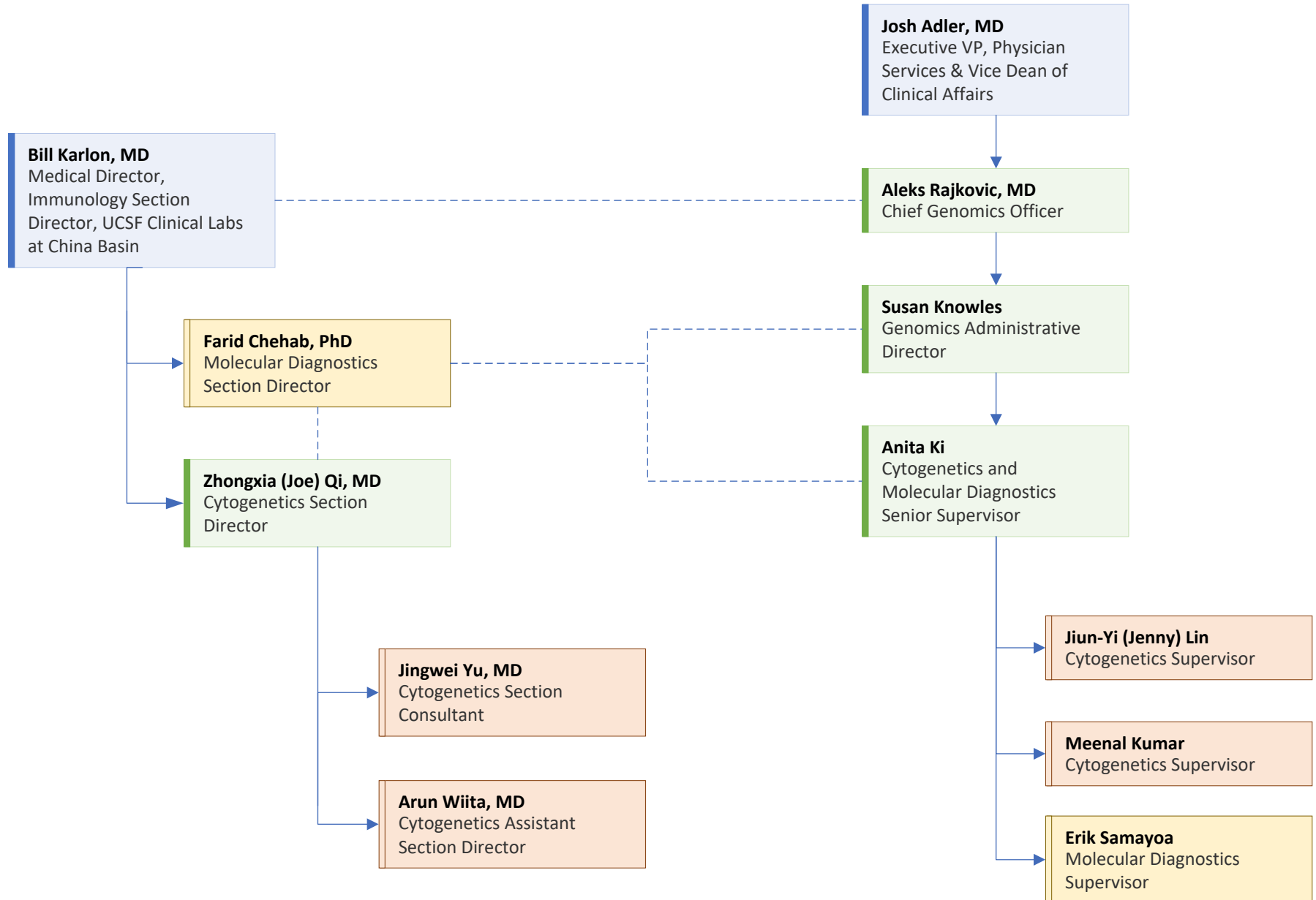
UCSF Clinical Labs at Mount Zion (MZ)



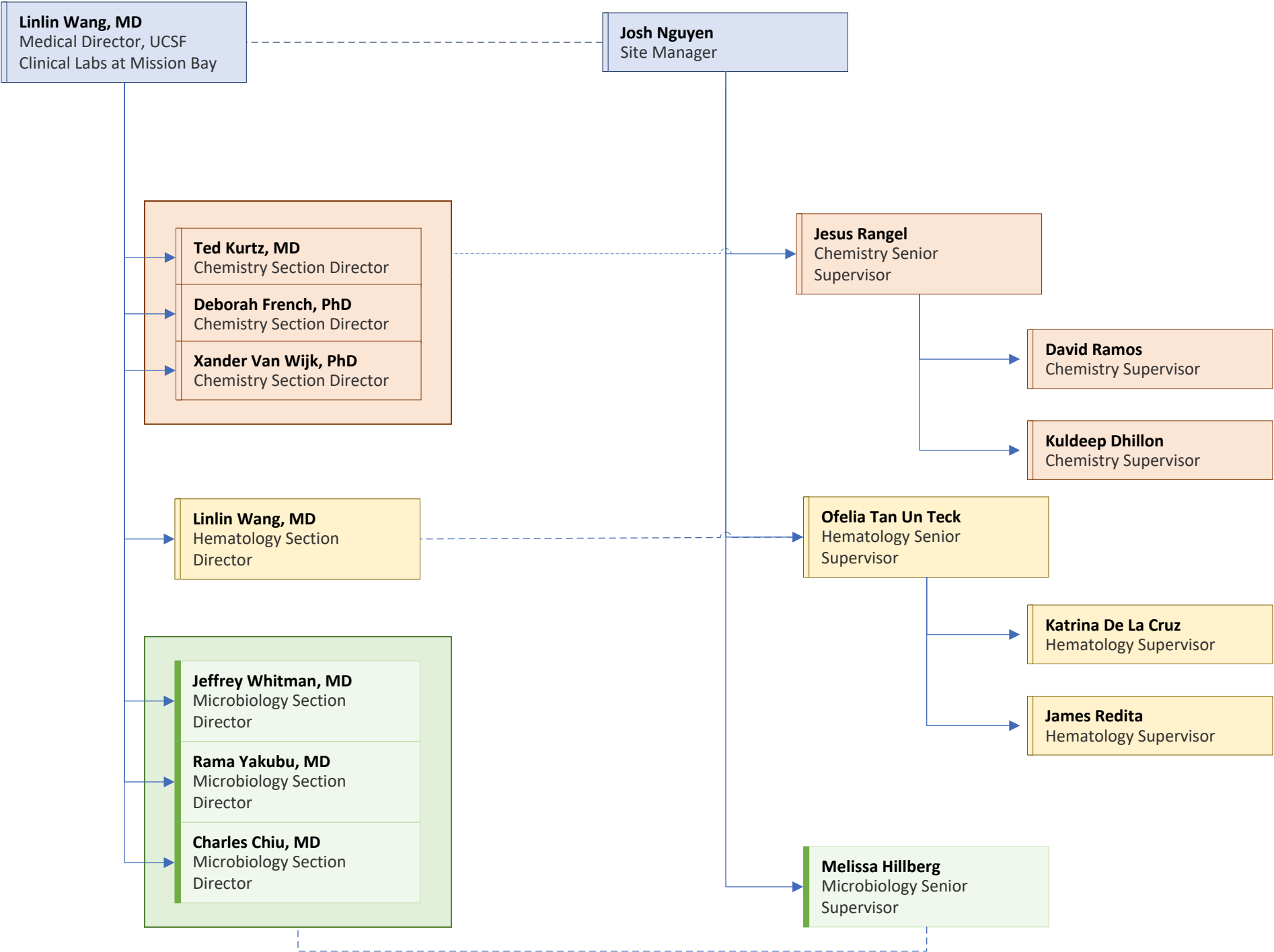
UCSF Clinical Labs at China Basin (CB)



Genomics - China Basin (CB)



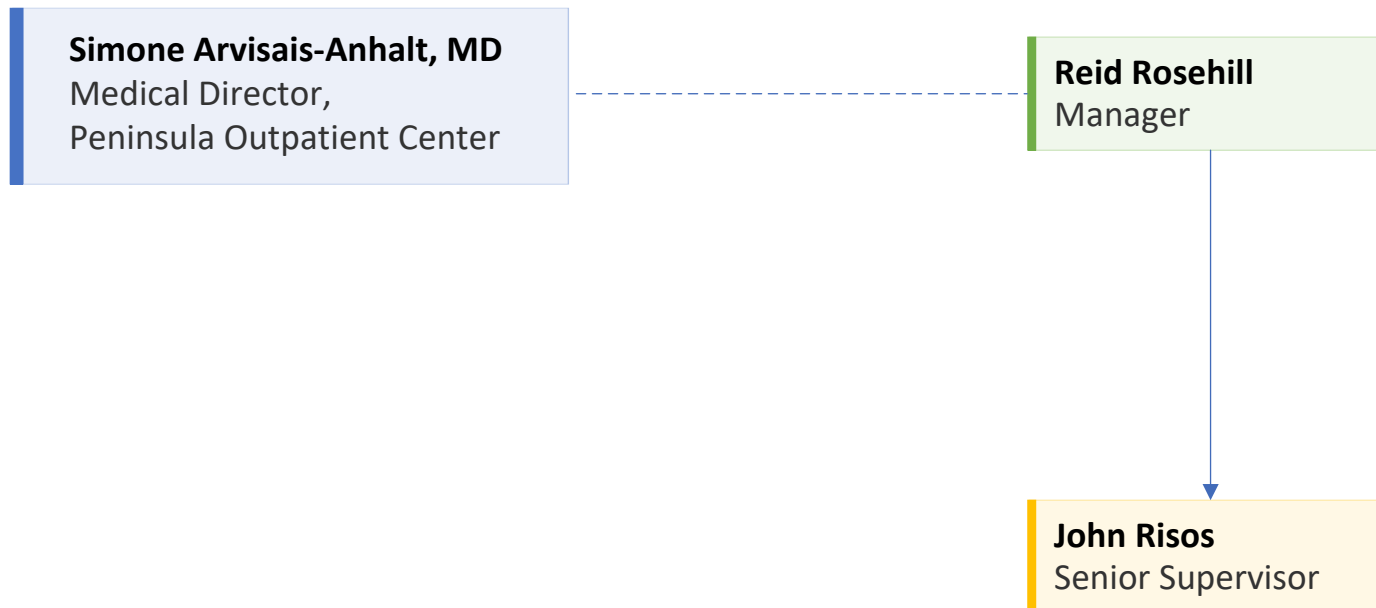
UCSF Clinical Labs at Mission Bay (MB)



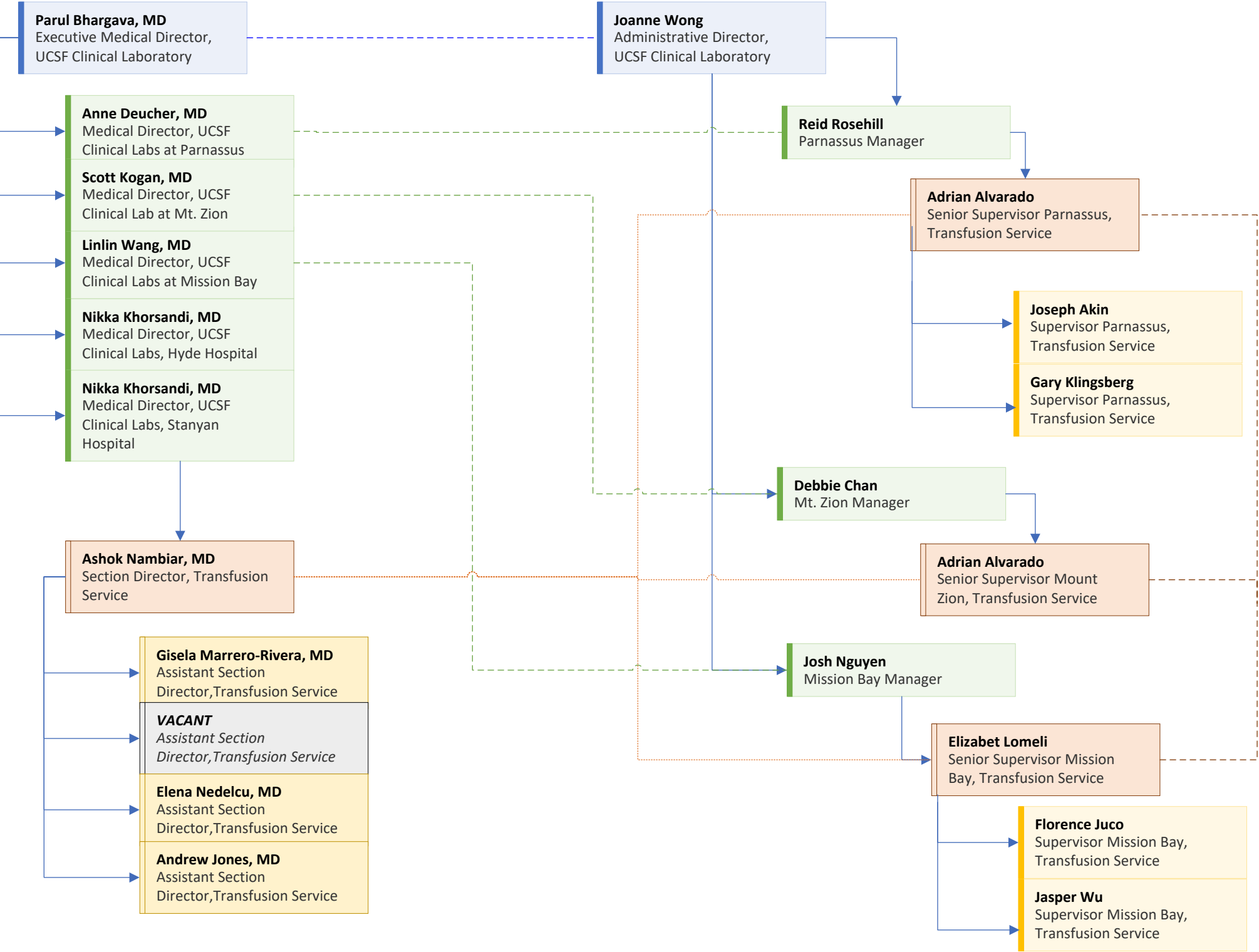
UCSF Clinical Labs at Berkeley Outpatient Center (BOPC)



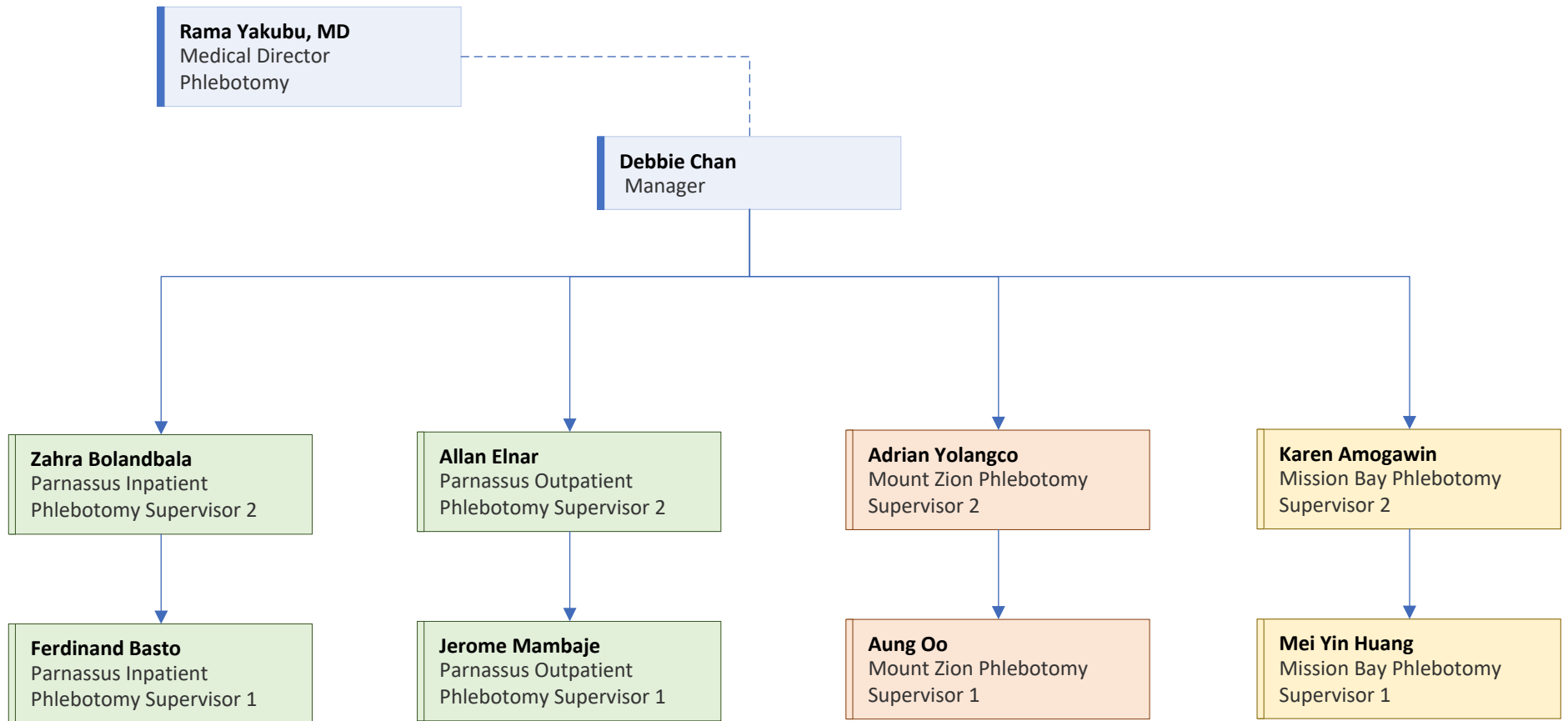
UCSF Clinical Labs at Peninsula Outpatient Center (POPC)



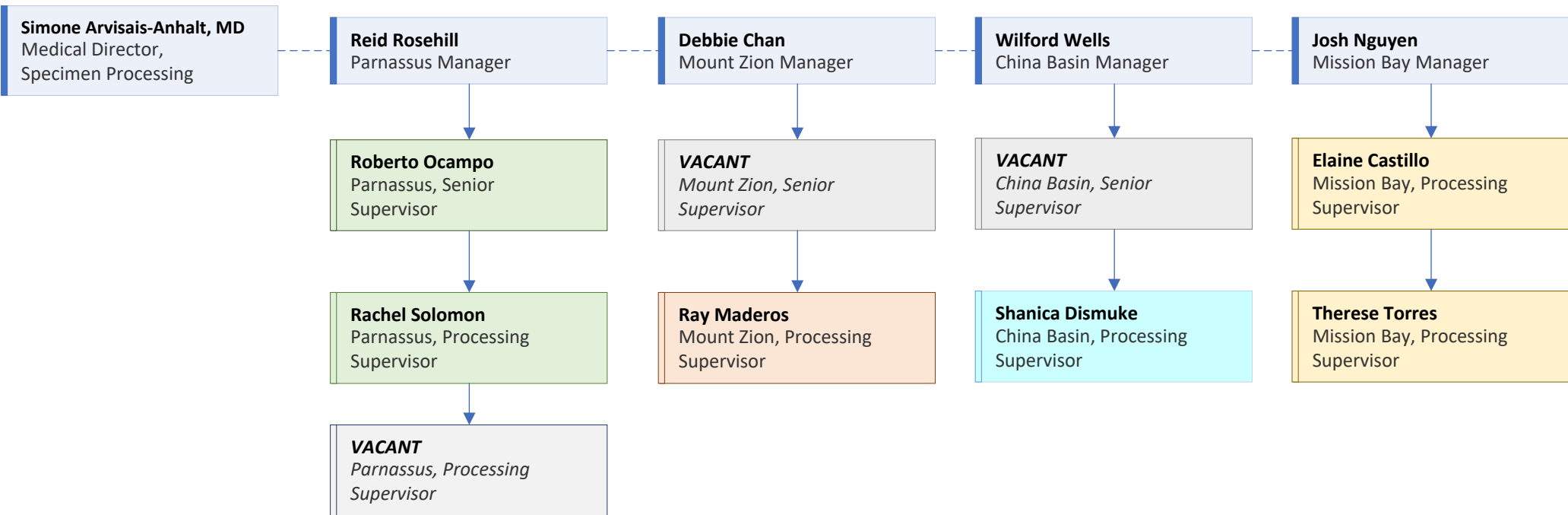
UCSF Transfusion Medicine Services



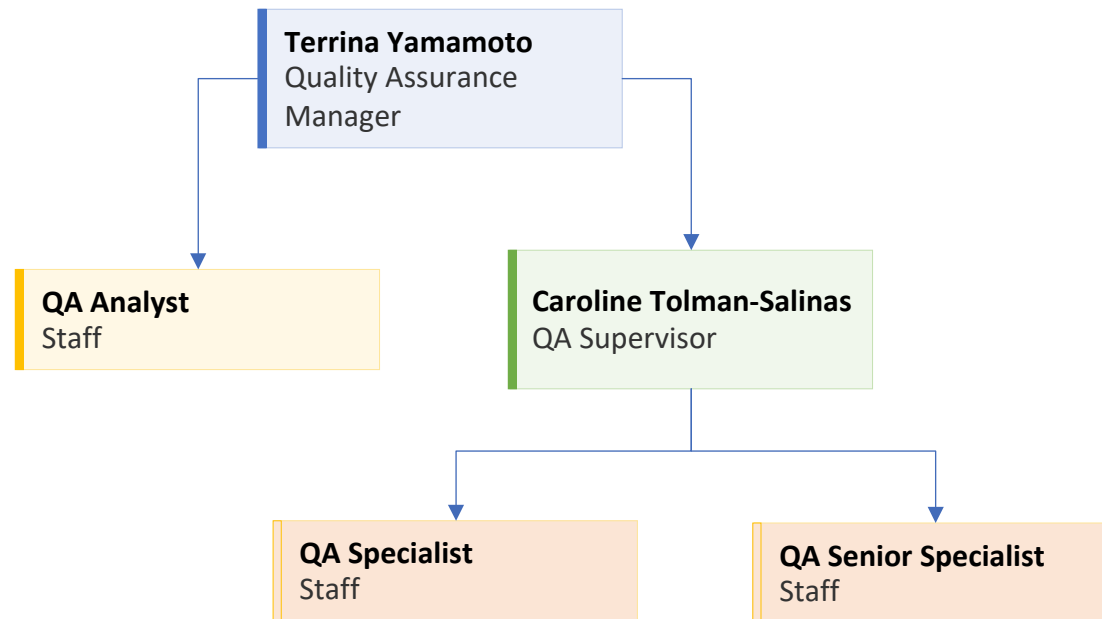
UCSF Clinical Labs Phlebotomy



UCSF Clinical Labs Central Processing



UCSF Clinical Labs Quality Assurance/Regulatory Compliance/Safety



UCSF Clinical Labs Programs

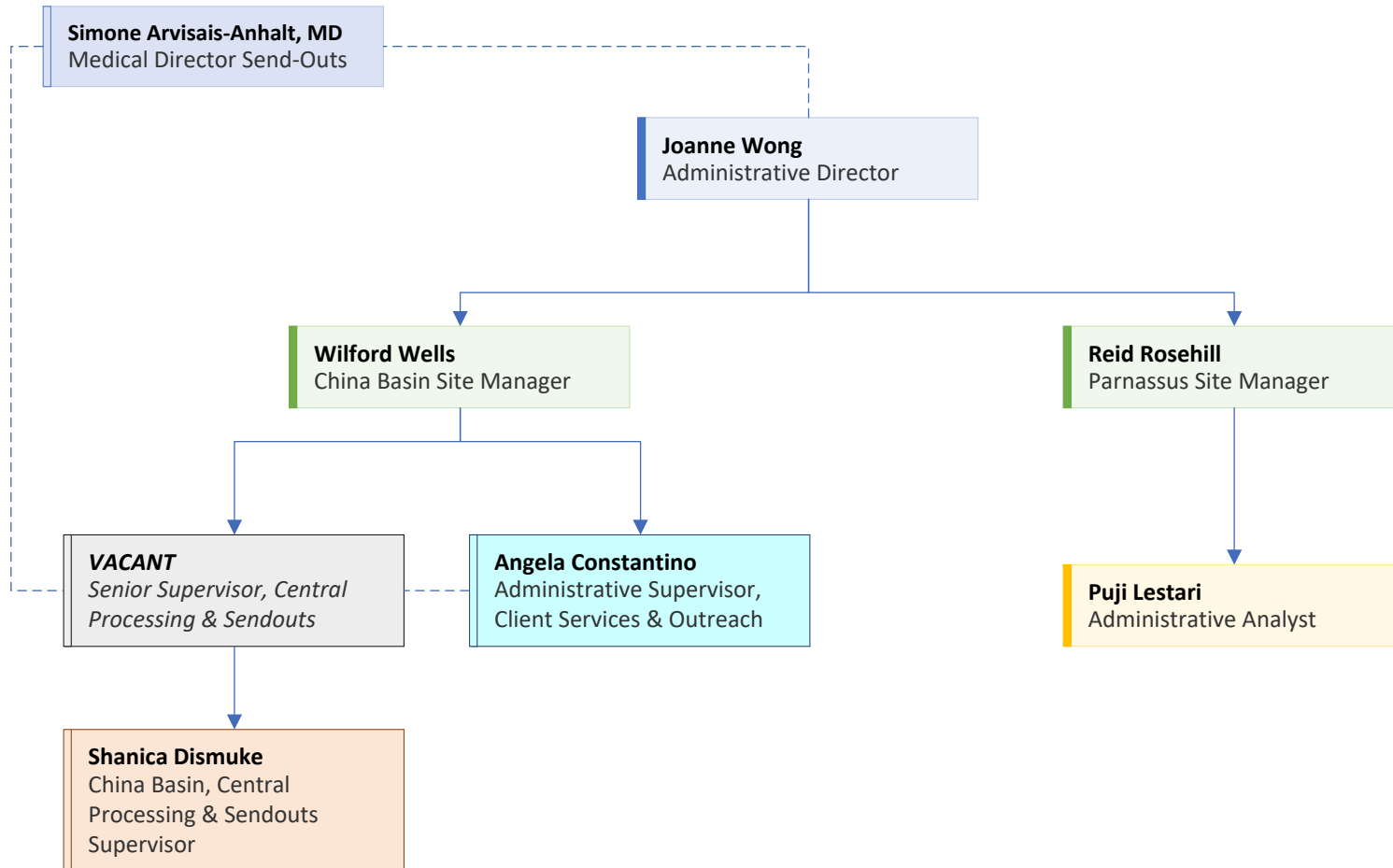
Terrina Yamamoto
Manager

```
graph TD; TY[Terrina Yamamoto  
Manager] --> SA[Shaun Arevalo  
Supervisor]; SA --- CLTP[CLS Training Program]; SA --- CEP[Continuing Education Program]; SA --- DCP[Document Control Program]; SA --- SLP[Step Ladder Program];
```

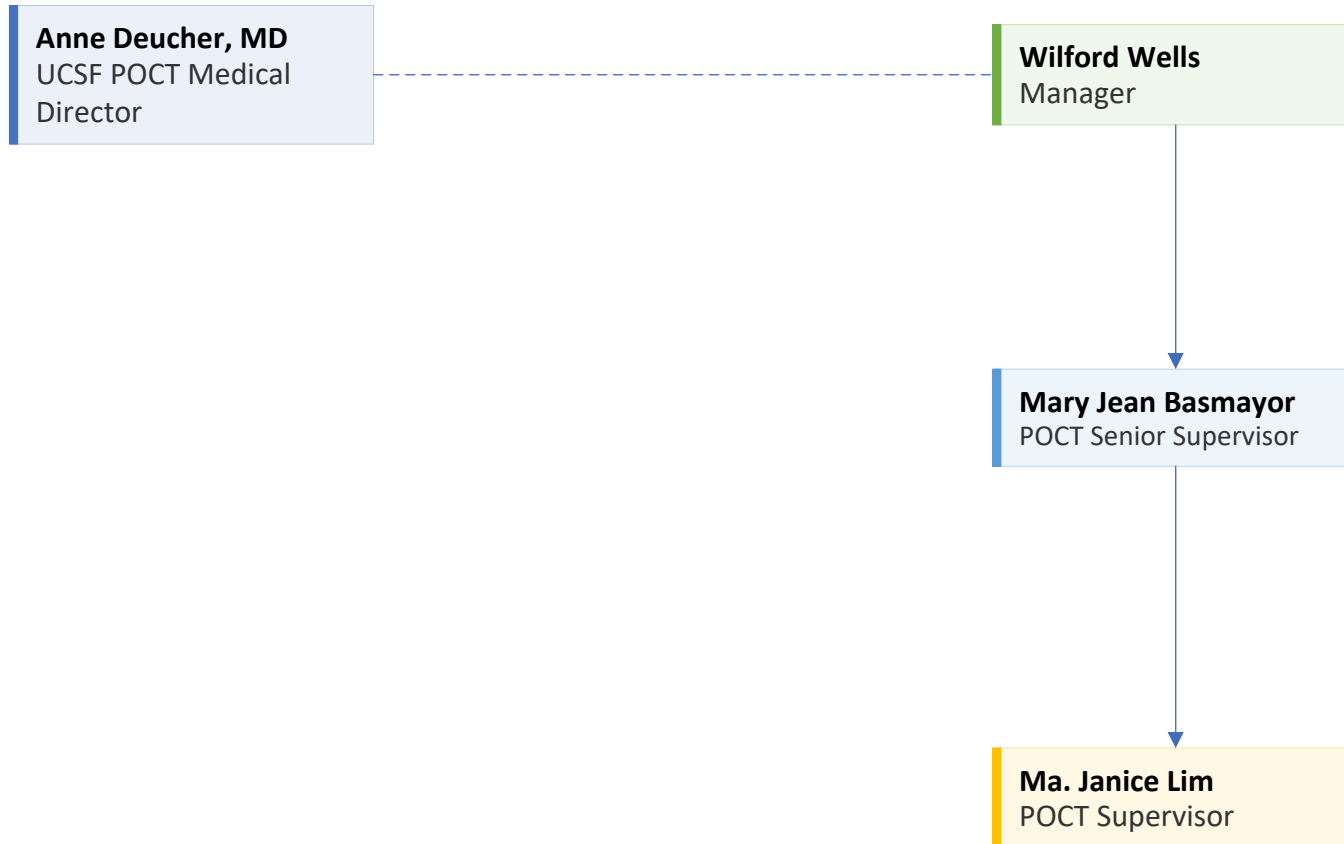
Shaun Arevalo
Supervisor

CLS Training Program
Continuing Education Program
Document Control Program
Step Ladder Program

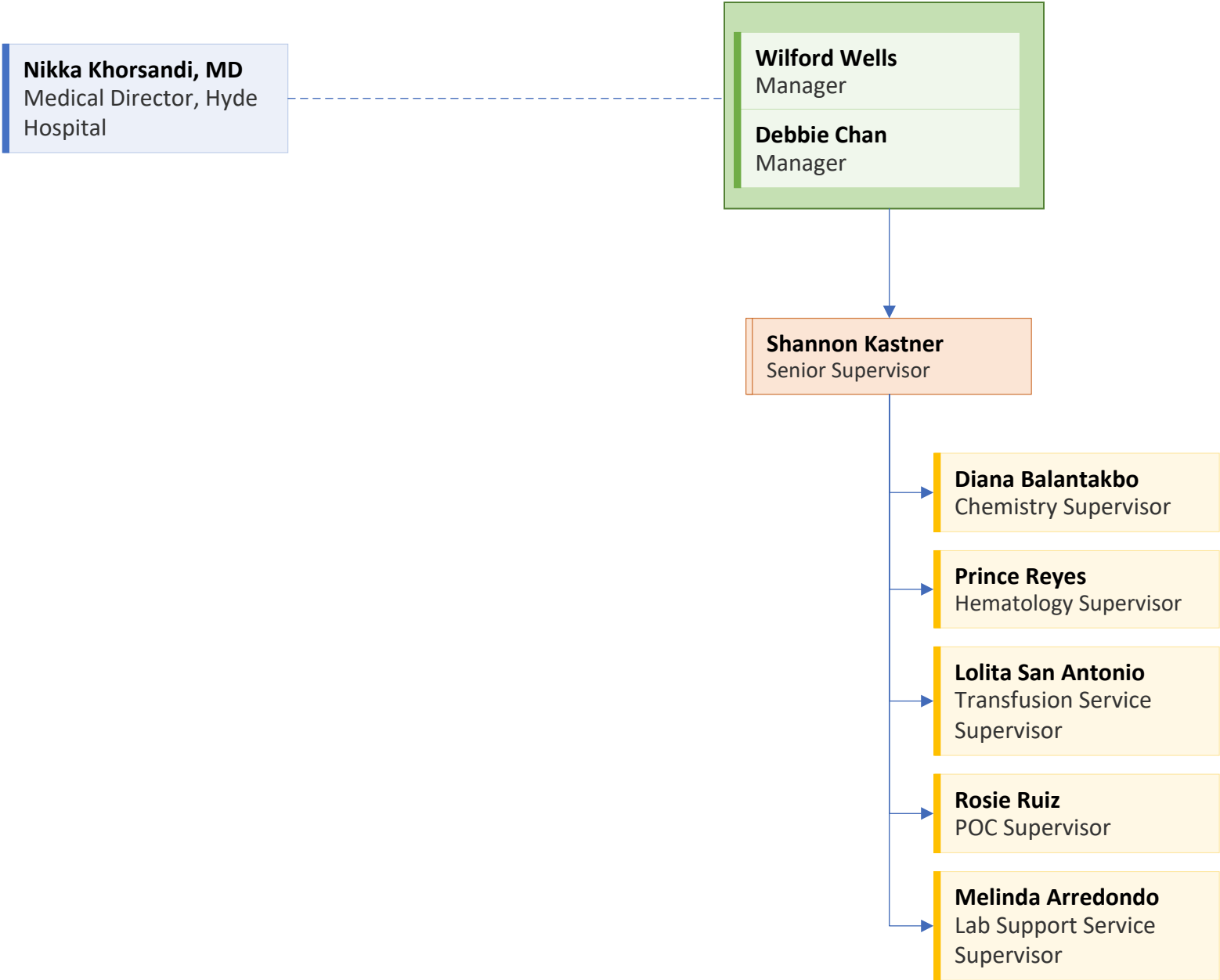
UCSF Clinical Labs Administration & Ancillary Services



UCSF Point of Care Testing (POCT)



UCSF Clinical Labs at Hyde Hospital (HH)



UCSF Clinical Labs at Stanyan Hospital (SH)

