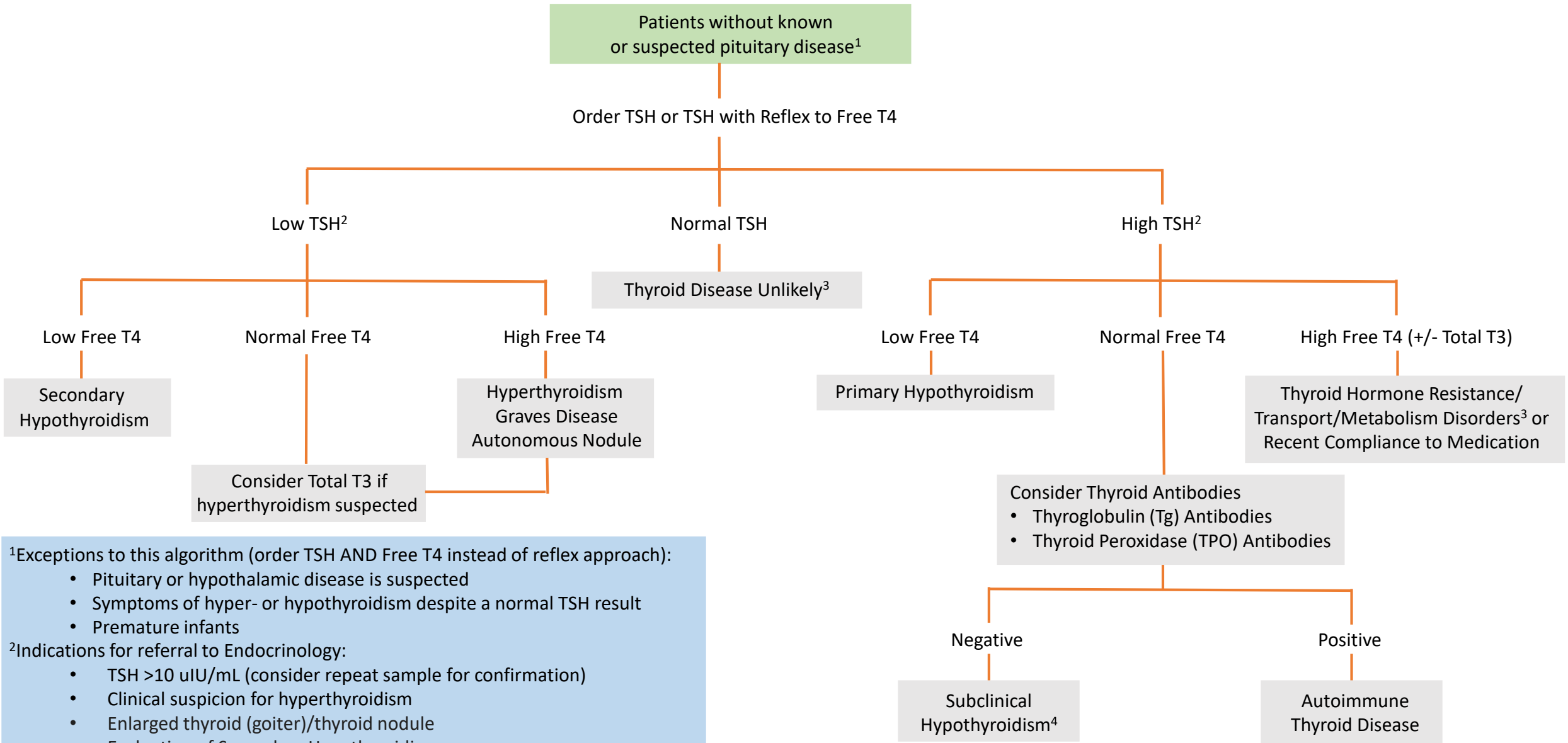


Guideline: Thyroid Function Ordering Algorithm



¹Exceptions to this algorithm (order TSH AND Free T4 instead of reflex approach):

- Pituitary or hypothalamic disease is suspected
- Symptoms of hyper- or hypothyroidism despite a normal TSH result
- Premature infants

²Indications for referral to Endocrinology:

- TSH >10 uIU/mL (consider repeat sample for confirmation)
- Clinical suspicion for hyperthyroidism
- Enlarged thyroid (goiter)/thyroid nodule
- Evaluation of Secondary Hypothyroidism
- Thyroid antibodies are positive (Tg or TPO)

³TSH can be inappropriately normal in patients with Resistance to Thyroid Hormone and thyroid hormone transport/metabolism disorders.

⁴Consider referral for persistent Subclinical Hypothyroidism:

<https://www.thyroid.org/hypothyroidism-children-adolescents/>