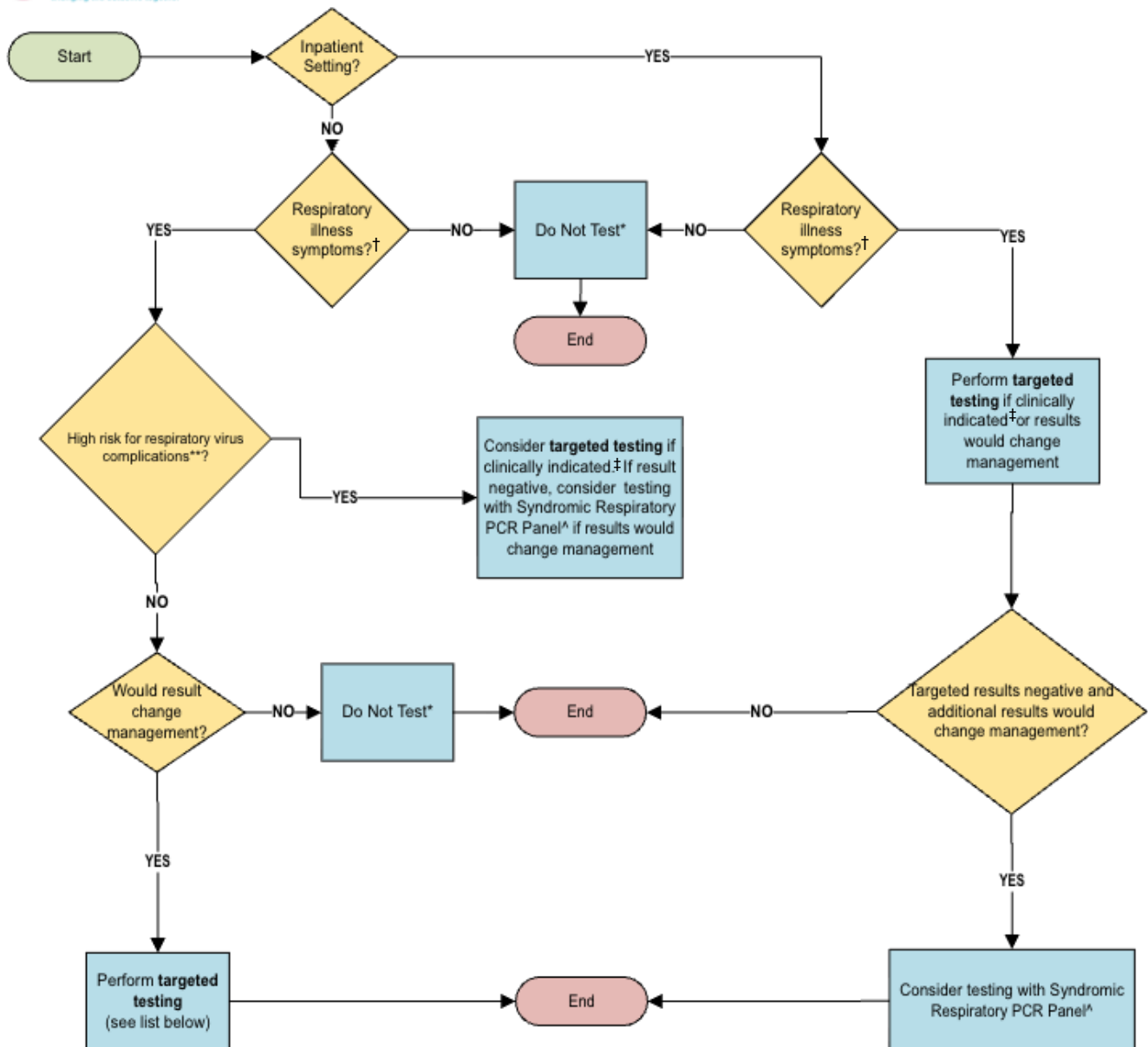


CCHMC Respiratory Virus Testing Algorithm



†Respiratory illness symptoms may include: nasal congestion, cough, loss of taste or smell, fever, chills, muscle aches, fatigue, etc.

* Testing might be necessary for certain situations (e.g. surveillance screening or outbreak investigations).

**High risk resp virus complication examples include:

- Immunocompromised
- Respiratory symptoms and requiring ICU level of care
- Patient age (<6mo or premature infants)
- Children <2 years old with chronic lung or heart disease
- Children with neuromuscular disorders
- H5N1 risk factors: Consumption of raw milk, close contact with dairy cows, or close contact with wild birds. Children with any respiratory illness and/or conjunctivitis should be screened for these H5N1 risk factors. Syndromic Respiratory PCR Panel should be utilized in working up for H5N1

‡ Clinical indications for testing can include:

- High index of suspicion for a treatable infection like influenza, pertussis, or COVID-19 after a known exposure or in patients eligible for treatment
- Identification of an organism will complete a work-up such as with fever of unknown origin or Kawasaki disease rule-out
- Identification of an organism may lead to not starting antibiotics for a presumed bacterial infection

^Syndromic Respiratory PCR Panel ordered as outpatient, is not usually covered by patient's insurance

[Pathogen Trends & Insights: What's Bugging Us Site](#)
[CDC Respiratory Data Website](#)

CCHMC Tests

[COVID/Flu A&B/RSV panel](#) - \$\$

[COVID/Flu A&B panel, Rapid](#) - \$\$

[COVID/Flu A&B panel](#) - \$

[COVID molecular](#) - \$

[Flu A&B molecular](#) - \$

[RSV molecular, Rapid](#) - \$

[RSV molecular](#) - \$

[Pertussis molecular](#) - \$\$

[Mycoplasma molecular](#) - \$\$\$

[Syndromic Respiratory PCR Panel](#) - \$\$\$\$