

COLLEGE of AMERICAN  
PATHOLOGISTS

## CERTIFICATE OF ACCREDITATION

**Clinical Associates, LLC dba CPA Lab**  
**Louisville, Kentucky**  
**Alvin W. Martin, MD**

CAP#: 7199204

CLIA#: 18D1066325

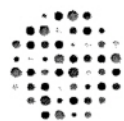
The organization named above meets all applicable standards for accreditation and is hereby accredited by the College of American Pathologists' Laboratory Accreditation Program. Reinspection should occur prior to **March 16, 2027** to maintain accreditation.

Accreditation does not automatically survive a change in director, ownership, or location and assumes that all interim requirements are met.

Kathleen G. Beavis, MD  
Chair, Accreditation Committee

Donald S. Karcher, MD, FCAP  
President, College of American Pathologists





COLLEGE of AMERICAN  
PATHOLOGISTS

## CERTIFICATE OF ACCREDITATION

**Clinical Associates, LLC dba CPA Lab**  
**Louisville, Kentucky**  
**Lisa A. Wills Frank, MD**

CAP#: 1617305

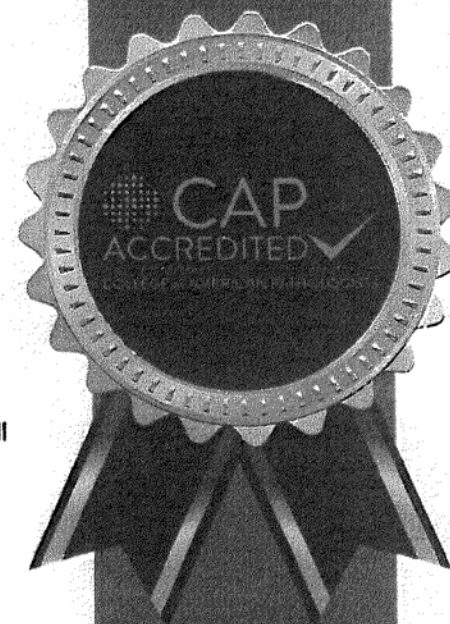
CLIA#: 18D0931402

The organization named above meets all applicable standards for accreditation and is hereby accredited by the College of American Pathologists' Laboratory Accreditation Program. Reinspection should occur prior to **March 16, 2025** to maintain accreditation.

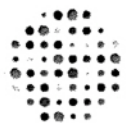
Accreditation does not automatically survive a change in director, ownership, or location and assumes that all interim requirements are met.

Kathleen G. Beavis, MD  
Chair, Accreditation Committee

Emily E. Volk, MD  
President, College of American Pathologists







COLLEGE of AMERICAN  
PATHOLOGISTS

## CERTIFICATE OF ACCREDITATION

**Clinical Associates, LLC dba CPA Lab**  
**Louisville, Kentucky**  
**Bennie C. Slucher, MD**

CAP#: 1617304

CLIA#: 18D0911398

The organization named above meets all applicable standards for accreditation and is hereby accredited by the College of American Pathologists' Laboratory Accreditation Program. Reinspection should occur prior to **March 16, 2025** to maintain accreditation.

Accreditation does not automatically survive a change in director, ownership, or location and assumes that all interim requirements are met.

Kathleen G. Beavis, MD  
Chair, Accreditation Committee

Emily E. Volk, MD  
President, College of American Pathologists

