



BD Urine Collection Device - Foley

Gather Supplies:

For Urinalysis and Urine Culture use NEW Foley Kit

Kit includes:

- Luer-Lock Access Device
- UA Tube
- C & S Tube
- Alcohol Prep Pad



For Urine Chemistry and other tests use:

- Urine Chemistry Tube
 - Luer-Lock Access Device
- *Available separately from Foley Kit*

- Drug Screens: AMPH, TCA, PCP
- Pregnancy
- UPEPs (send 2 Chemistry tubes)
- Low Volume Collection
 - < 3 ml's for culture
 - < 7 ml's for UA



Label tubes in the presence of the patient.
Only send tube to lab

Foley Collection Steps:



Step 1: Open package of Luer-Lock Access Device and set aside.



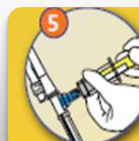
Step 2: Clamp the drainage tube (with padded hemostat) a minimum of 12 inches below the sample port and allow urine to fill tubing until visible under the port.



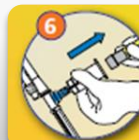
Step 3: Clean the surface of the sampling port with an alcohol wipe.



Step 4: Using aseptic technique, place Luer-Lock Access Device over sample port and screw on until it fits securely.



Step 5: For Culture, place C&S tube into the holder portion of Access Device and push in. Once tube is completely filled, remove tube from holder. Invert 8-10 times.



Step 6: For UA, repeat Step 5 using the UA tube.



Step 7: Remove Luer-Lock Access Device by unscrewing it counter clockwise.



Step 8: Unclamp the drainage tube.



Step 9: Discard the Luer-Lok device into a sharps container.

Refer to PROC 262: Specimen Collection