

# Women’s Health Test and Specimen Collection Guide

Always refer to the UR Medicine Labs test menu for up-to-date test information and collection instructions



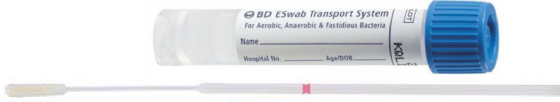
## Vaginitis / Bacterial vaginosis

Tests available:	Code:	Reported:	Specimen:	Collection Device(s)
Vaginal Pathogens DNA Direct Probes	PVS	Gardnerella, Candida, Trichomonas	Vaginal swab	BD Affirm VPIII Collection and Transport
				BD Eswab (White or Blue)
Trichomonas vaginalis NAAT	TRCDL	Trichomonas vaginalis	Vaginal swab	Aptima Multitest Swab
			First-void urine	Aptima Urine Collection kit
Gram stain, Vaginosis	GSV	PMNs, Clue cells, Yeast, Bacterial morphotypes (Lactobacillus, Gardnerella, Mobiluncus), and Nugent score	Vaginal swab	BD Eswab (White)
Yeast Urogenital Culture	FUG	Yeast identified to species	Vaginal swab	BD Eswab (White)

## Collection Devices

### BD Eswab (Mini tip) Blue

Best for urethra, nasopharynx



### BD Eswab (Regular tip) White



## Group B *Streptococcus* (*Streptococcus agalactiae*)

Tests available:	Code:	Reported:	Specimen:	Collection Device(s)
GBS Culture	GBS	Group B Streptococcus	Pooled vaginal/rectal swab	BD Eswab (White)
GBS Culture with Susceptibilities	GBSS	Group B Streptococcus and susceptibility testing for Penicillin allergic patients	Pooled vaginal/rectal swab	BD Eswab (White)

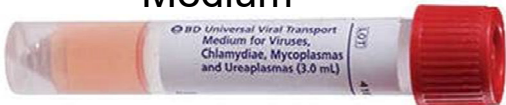
### BD Affirm VPIII Collection and Transport



## Genital herpes

Tests available:	Code:	Reported:	Specimen:	Collection Device(s)
Herpes Simplex Virus NAAT	HSVRL	Herpes simplex virus 1/2	Lesion swab	BD Universal Viral Transport

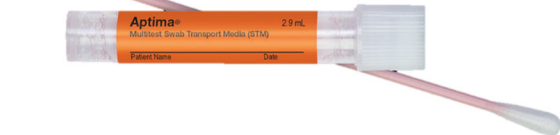
### BD Universal Viral Transport Medium



## Vaginal Injury / Trauma / Postsurgery / Toxic Shock Syndrome (TSS)

Tests available:	Code:	Reported:	Specimen:	Collection Device(s)
Aerobic Bacterial Urogenital Culture	BUG	Potential pathogens or Normal flora	Vaginal swab	BD Eswab (White)
Yeast Urogenital Culture	FUG	Yeast identified to species	Vaginal swab	BD Eswab (White)
Urogenital Culture with “R/O TSS”	BUG	If “R/O TSS” comment indicated during ordering: Staphylococcus aureus presence/absence reported	Vaginal swab	BD Eswab (White)

### Aptima Multitest Swab



### Aptima Unisex Swab



### Aptima Urine Specimen Collection kit



### Copan FLOQSwab 552C.RM



### ThinPrep PreserveCyt



## Cervicitis (*Chlamydia*, *Gonorrhea*, *Trichomonas*, *Mycoplasma genitalium*)

Tests available:	Code:	Reported:	Specimen:	Collection Device(s)
Chlamydia trachomatis NAAT and Neisseria gonorrhoeae NAAT	PDCL and PDGL	Chlamydia trachomatis and Neisseria gonorrhoeae	Patient or provider collected vaginal swab	Aptima Multitest Swab
			Throat swab	Aptima Multitest Swab
			Rectal swab	Aptima Multitest Swab Aptima Unisex Swab
			Cervical swab	Aptima Unisex Swab
			First-void urine	Aptima Urine Specimen Collection kit
Trichomonas vaginalis NAAT	TRCDL	Trichomonas vaginalis	Patient or provider collected Vaginal swab	Aptima Multitest Swab
			Cervical swab	Aptima Unisex Swab
			First-void urine	Aptima Urine Specimen Collection kit
Mycoplasma genitalium NAAT	MGNPL	Mycoplasma genitalium	Patient or provider collected Vaginal swab	Aptima Multitest Swab
			Cervical swab	Aptima Unisex Swab
			First-void urine	Aptima Urine Specimen Collection kit
Gonorrhea Culture	GC	Neisseria gonorrhoeae isolated	Cervical swab	BD Eswab (White)

## Human papillomavirus (HPV)

Tests available:	Code:	STI NAAT testing FDA-approved:	Reported:	Specimen:	Collection Device(s)
Cytology with options to co-test or reflex if ASCUS for HPV NAAT.	OEGYN	Chlamydia, Gonorrhea, and Trichomonas vaginalis on vaginal and cervical specimens. Chlamydia and Gonorrhea on rectal specimens.	HPV 16, HPV 18, and high-risk HPV types 31, 33, 35, 39, 45, 51, 52, 56, 58, 59, 66, and 68 as a pooled result by NAAT.	Provider collected vaginal, cervical, and rectal specimens	ThinPrep PreserveCyt
Primary HPV, Provider Collected Specimen with Reflex to PAP Smear	HPVRP	Chlamydia, Gonorrhea, and Trichomonas vaginalis on vaginal and cervical specimens.		Provider collected vaginal and cervical specimens	ThinPrep PreserveCyt
Primary HPV, Provider Collected Specimen, PAP Smear NOT included	HPVO	Chlamydia, Gonorrhea, and Trichomonas vaginalis on vaginal and cervical specimens. Chlamydia, Gonorrhea on rectal specimens.		Provider collected vaginal, cervical, and rectal specimens	ThinPrep PreserveCyt
Primary HPV, Patient Collected Vaginal Swab, PAP Smear NOT Included	HPVSO	No.		Patient collected vaginal swab	Copan FLOQSwab 552C.RM resuspended in ThinPrep PreserveCyt